

Headquarters



Design Office



Mizuki Factory (Assembly Plant)



Hitachi Musen Denki Co., Ltd.

Headquarters/ Postal code: 317-0065
 1-14-4 Sukegawa-cho, Hitachi-shi, Ibaraki
 Tel: 0294-23-3255 (Main Switchboard) Fax: 0294-23-2668

Design Office/ Postal code: 316-0035
 3-10-7 Kokubu-cho, Hitachi-shi, Ibaraki
 Tel: 0294-28-5722 Fax: 0294-32-0151

Mizuki Factory/ Postal code: 316-0024
 2-27-14 Mizuki-cho, Hitachi-shi, Ibaraki

E-mail : musen@hitachi-musen.co.jp



HITACHI MUSEN DENKI

Corporate Profile

*Electrical and
Instrumentation engineering*



Hitachi Musen Denki Co., Ltd

Hitachi Musen Denki provides optimum solutions to our customers by taking advantage of our new technologies in response to the demands of the times and the wealth of expertise

Hitachi Musen Denki is an engineering company specialized in electric and instrumentation fields in response to a wide range of needs related to industrial electric equipment and instrumentation equipment for factories, various plants, etc. Energy savings and ensuring safety and security ...

We offer the most appropriate solutions for the various challenges of our customers.

With our new technologies in response to the change of the times and the wealth of expertise and our flexible ideas, we support people-friendly and earth-friendly manufacturing

Corporate Profile

● Company name Hitachi Musen Electric Co., Ltd.
 ● Location Headquarters: 1-14-4 Sukegawa-cho, Hitachi-shi, Ibaraki
 Tel: +81-0294-23-3255 (Main Switchboard)
 Fax: +81-0294-23-2668
 Design Office: 3-10-7 Kokubu-cho, Hitachi-shi, Ibaraki
 Tel: +81-0294-28-5722
 Fax: +81-0294-32-0151
 Mizuki Factory: 2-27-14 Mizuki-cho, Hitachi-shi, Ibaraki

● Representative President: Kensuke Kudo
 ● Established May 1953
 ● Capitalization ¥ 20,000,000
 ● History May 1953: Hitachi Musen Electric Co., Ltd., was established and started the wholesale distribution of electric work materials and electronic parts.
 November 2005: Design office was opened.
 2008: Obtained the special construction license.
 September 2009: Mizuki Factory was opened.
 2018: Obtained the Worker dispatching business license.

● Business Outline
 Electrical Construction
 Instrumentation engineering of various plants
 Devices and electric facilities materials for various industries
 Design and manufacturing of control panels and operating panels
 Manpower dispatching and electric instrumentation works for thermal power plants

● Major Customers (no particular order)
 Mitsubishi Heavy Industries, Ltd.
 Hitachi Ltd. Energy Business Unit.
 Hitachi Ltd. Healthcare Business Unit.
 Hitachi Power Solutions Co., Ltd.
 General Electric Global Services GmbH
 Fieldcore Service Solutions International LLC
 Tohiba Plant Systems & Services Corporation
 Nuclear Engineering and Service Company
 Tokyo Power Technology Ltd.

● Banks
 Mizuho Bank, Hitachi Branch
 Higashi-Nippon Bank, Hitachi Branch
 Joyo Bank, Hitachi Branch



For unlocking the potentials of each and every employees and making maximum use of their powers

Human Resources Development

Hitachi Musen Denki considers human resources as the most important management resource and tries to develop them at every opportunity. We are willing to provide support for enhancing the abilities of each and every employee and unlocking their potential, such as on-site education by OJT and support for the acquisition of qualifications for self-development.

Welfare

Hitachi Musen Denki actively addresses the enrichment of off time as well as the creation of a pleasant working environment. We use facilities of Karuizawa as a place of the communication. Our employee can use the facilities freely anytime.



Karuizawa 「Asama terrace」

Environmental Activities

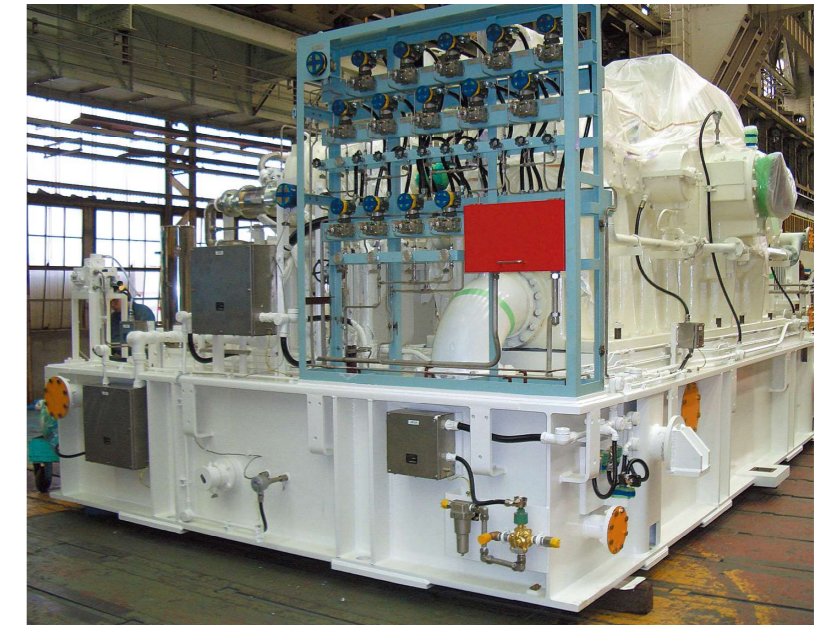
We provide environmentally friendly products.
 We will strive to continue to provide our services.

Our results

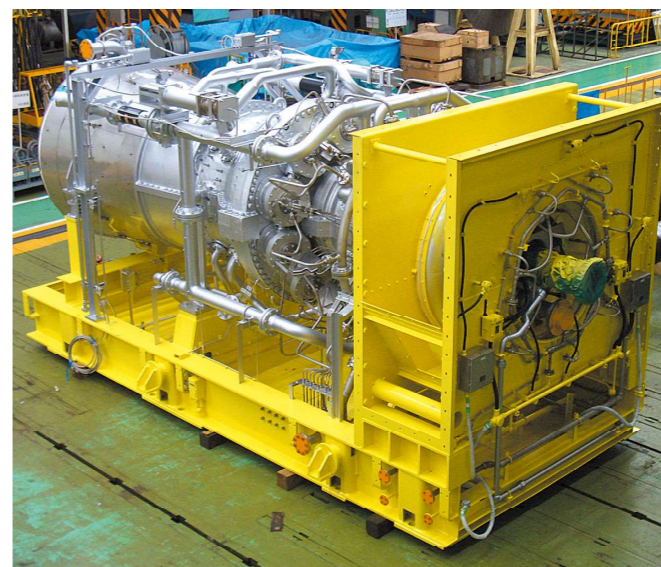
Hitachi Musen Denki deals with a wide range of needs from procurement of various materials to the work, design, and manufacturing of instrument panels and control panels.



Instrument Panel



Example of installation of electric material parts



Example of Total Work



Control Panel

Hitachi Musen Denki's experienced staff materializes the needs of our customers accurately and appropriately.



Procurement of the materials best suitable for your needs



Reliable organization with design department



Design work using a CAD system